

# Collin County Regional Trails Master Plan

## Executive Summary



# PLAN BACKGROUND

## Purpose

- Reflect the accomplishments of the 2012 Master Plan
- Provide direction for the continued development of the countywide trail network
- Reflect the vision of county residents and stakeholders

## Goals

- Identify a recommended trail network that fills critical system gaps and provides interjurisdictional connection opportunities
- Create a realistic action plan for future capital investments and implementing future trail segments
- Provide guidance for policies and design standards for the development of trail facilities for communities within Collin County, particularly smaller municipalities with limited staff capacity



# MASTER PLAN PHASES



## PHASE 1: DISCOVER

- Windshield Tour
- System Inventory
- Technical Advisory Group
- Agency Coordination
- Community Survey



## PHASE 2: ASSESS

- Network Evaluation
- Needs Assessment
- Opportunities & Constraints
- Public Open House #1
- Plan Goals



## PHASE 3: RECOMMEND

- Future Network Map
- Draft Corridor Alignments
- Policy/Program Recommendations
- Public Open House #2



## PHASE 4: IMPLEMENT

- Identify Evaluation Criteria
- Implementation Plan
- Funding Opportunities
- Final Plan Adoption

# ENGAGEMENT EFFORTS

## Stakeholder Engagement

- Park Foundation Advisory Board
- Technical Advisory Group
- Agency Coordination Meetings (Cities, Towns, Other Governmental Agencies)
- Additional Coordination Meetings
  - NCTCOG
  - DART
  - TxDOT

## Public Engagement

- Community Survey (Late 2024)
- Public Meeting 01 (April 2025)
- Public Meeting 02 (August 2025)

## ENGAGEMENT KEY FINDINGS

- The majority of trail users in Collin County today utilize **paved trails** or **walking trails within parks**.
- The primary reason people use trails is for **exercise** or **recreational activity**.
- Trail users would like to be able to use trails to access destinations such as **park and recreation facilities, surrounding communities, and eating and drinking establishments**.
- The main reasons people aren't utilizing trails is because there is a **lack of trails** in their area or **lack of connections** to key destinations.
- Having future **trails** that are **close to where residents live** is a top priority.
- **Feeling safe** while using trails is a top priority.



# PLAN GUIDING PRINCIPLES



## • Connect

Promote a regional trail system that creates key connections between communities throughout Collin County by identifying critical gaps and key corridors for future trail development.



## • Coordinate

Work with municipalities to build upon existing trail planning efforts to continue to grow the regional trail system and incorporate the recommendations of the countywide master plan into future trail planning and implementation.



## • Invest

Utilize the priorities identified in the Collin County Regional Trails Master Plan to guide investment in municipal trail projects.



## • Prioritize

Prioritize the implementation of key trail connections that provide intercity connections, preserve key corridors, and introduce new trails into underserved areas of the County.



# RECOMMENDED TRAIL SYSTEM MAP

## LEGEND

- WATERBODIES
- FLOODPLAIN
- UNINCORPORATED COLLIN COUNTY
- COUNTY BOUNDARY
- ROADS
- PROPOSED ROADS
- RAILROADS
- PROPOSED OUTER LOOP
- EXISTING TRAILS
- LOCALLY PLANNED TRAILS

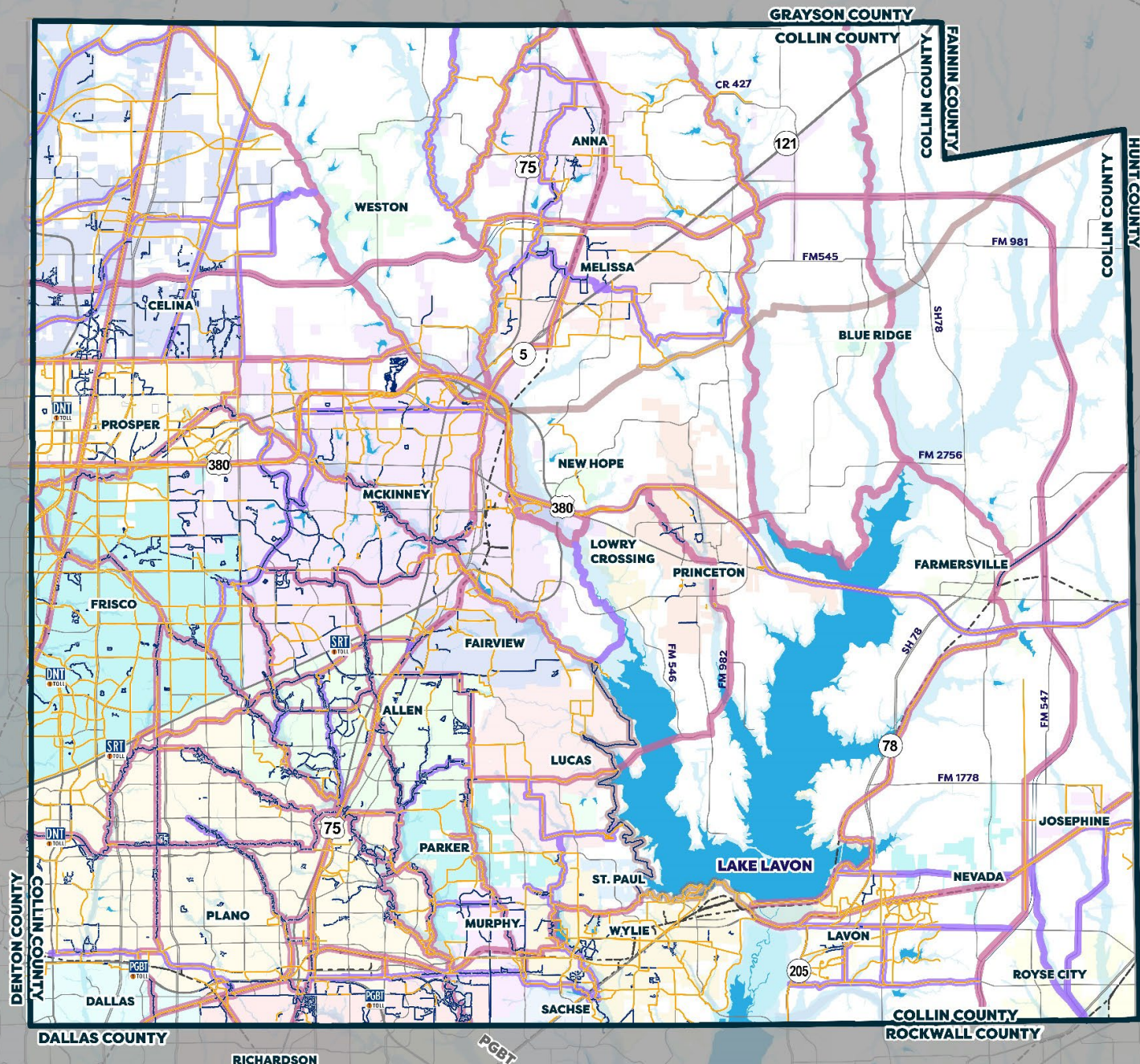
## RECOMMENDED TRAIL SYSTEM

- SPINE TRAIL CORRIDORS
- COMMUNITY TRAIL CORRIDORS
- MAJOR SOFT SURFACE TRAIL CORRIDOR

**Spine Trail Corridors:** Represent corridors that create major trail connections between multiple communities and typically extend far distances.

**Community Trail Corridors:** Represent corridors that create significant connections within a single community or shorter connections between multiple communities.

**Major Soft-Surface Trail Corridors:** Represent corridors of opportunity to be preserved for future soft-surface trail facilities to provide trail access any more environmentally sensitive areas of the County.







# KEY CONNECTION POINTS

## LEGEND

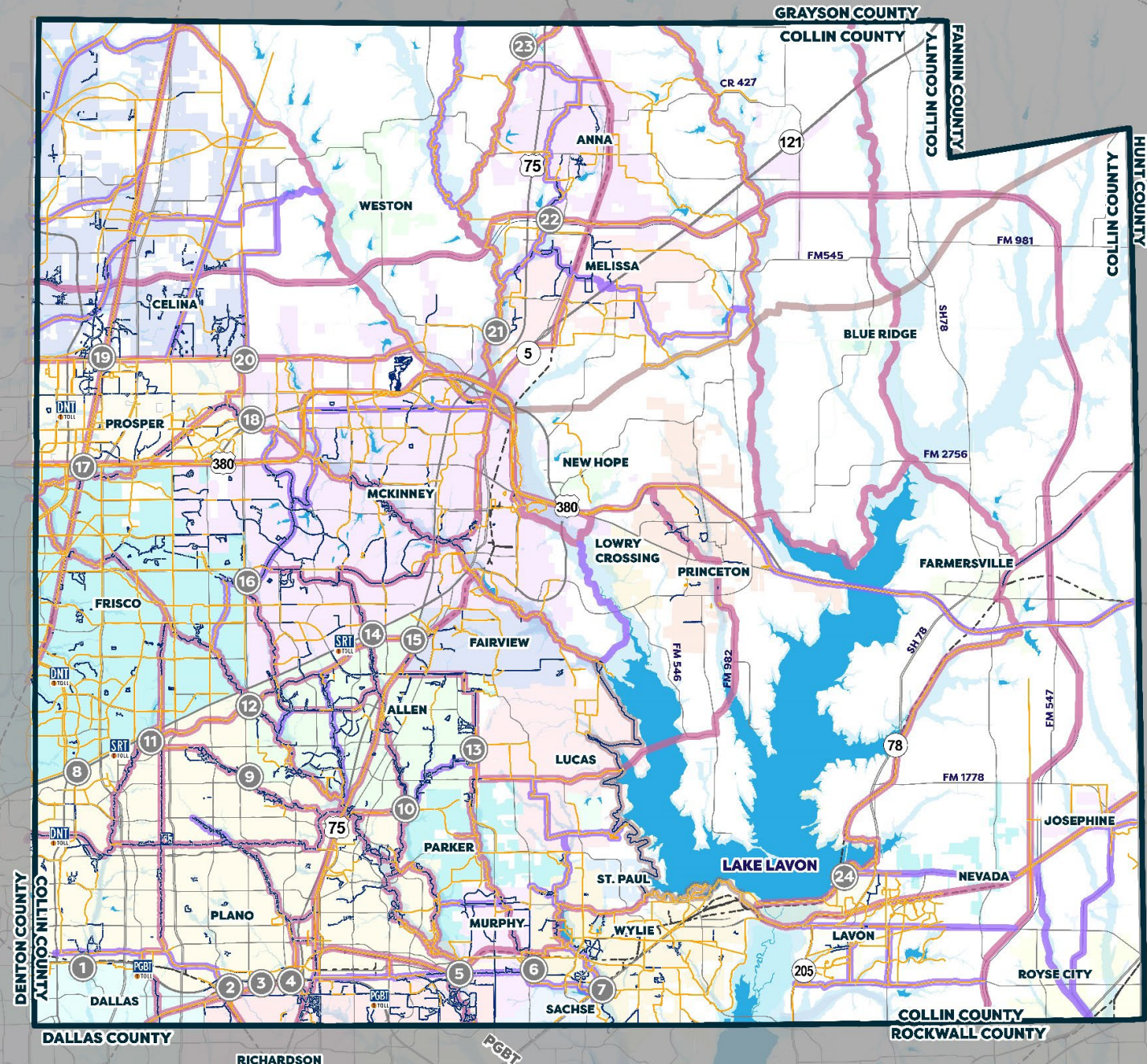
- WATERBODIES
- FLOODPLAIN
- UNINCORPORATED COLLIN COUNTY
- COUNTY BOUNDARY
- ROADS
- PROPOSED ROADS
- RAILROADS
- PROPOSED OUTER LOOP
- EXISTING TRAILS
- LOCALLY PLANNED TRAILS

## RECOMMENDED TRAIL SYSTEM

- SPINE TRAIL CORRIDORS
- COMMUNITY TRAIL CORRIDORS
- MAJOR SOFT SURFACE TRAIL CORRIDOR
- KEY CONNECTION POINTS

**Key Connection Points:** Represent opportunities for key trail connections between communities

- **24** Key Connection Points have been identified as part of the update; **17** are incomplete and **7** are partially complete
- If completed, these Key Connection Points would provide connections between **18** total Collin County communities



# IMPLEMENTATION PROGRAM



**Connect** - *Promote a regional trail system that creates key connections between communities throughout Collin County by identifying critical gaps and key corridors for future trail development.*

Recommendation	Entities	Timeframe
Municipalities should maintain and update individual community trail plans to track local progress and plan for future implementation.	<b>Leads:</b> Cities and Towns <b>Partners:</b> County and NCTCOG	<b>Every five (05) years</b>
The Recommended Trail System identified in the Collin County Regional Trails Master Plan should be integrated into local planning efforts.	<b>Leads:</b> Cities and Towns <b>Partners:</b> County and NCTCOG	<b>Varies</b> (as trail plans are updated or as feasibility studies are conducted)
Feasibility studies should be conducted to determine suitable alignments for completing intercity trail connections.	<b>Leads:</b> Cities and Towns	<b>As needed</b> , as funding is available
Municipalities should adopt trail development regulations and trail design standards to support the implementation and maintenance of high-quality facilities.	<b>Leads:</b> Cities and Towns <b>Partners:</b> NCTCOG	<b>Ongoing</b> , as trails are implemented, locally planned alignments change, and new trail plans are adopted, this information should be shared with the County and NCTCOG



# IMPLEMENTATION PROGRAM



**Coordinate** - *Work with municipalities to build upon existing trail planning efforts to continue to grow the regional trail system and incorporate the recommendations of the countywide master plan into future trail planning and implementation.*

Recommendation	Entities	Timeframe
The Recommended Trail System identified in this master plan should be shared with NCTCOG to inform updates to the Regional Veloweb.	<b>Leads:</b> Cities and Towns <b>Partners:</b> NCTCOG	<b>Ongoing</b> , as trails are implemented, locally planned alignments change, and new trail plans are adopted this information should be shared with the County and NCTCOG
The County, municipalities, and regional transportation agencies should continue to coordinate on ongoing and future roadway projects.	<b>Leads:</b> County <b>Partners:</b> Cities and Towns, TxDOT, NCTCOG, DART	<b>Annually</b> , or as specific projects necessitate
The County and municipalities should regularly coordinate with regional governmental agencies to stay up to date on trail opportunities and updates to individual policies and guidelines.	<b>Leads:</b> County, Cities and Towns <b>Partners:</b> Oncor, NTMWD, TNMP	<b>As needed</b> , when funding is available, or when feasibility studies are conducted

# IMPLEMENTATION PROGRAM



**Coordinate** - *Work with municipalities to build upon existing trail planning efforts to continue to grow the regional trail system and incorporate the recommendations of the countywide master plan into future trail planning and implementation.*

Recommendation	Entities	Timeframe
Municipalities should continue to coordinate on the completion of intercity trail connections.	<b>Leads:</b> Cities and Towns	<b>As opportunities arise</b>
The County and municipalities should actively participate in regional and statewide trail planning efforts to stay informed and align related efforts to those of Collin County.	<b>Leads:</b> County, Cities and Towns <b>Partners:</b> TxDOT, NCTCOG	<b>As opportunities arise</b>
The County should continue to coordinate with trail stewards for the ongoing management and maintenance of trails.	<b>Leads:</b> County <b>Partners:</b> Trinity Trails Association	<b>Quarterly</b>



# IMPLEMENTATION PROGRAM



**Invest** - Utilize the priorities identified in the Collin County Regional Trails Master Plan to guide investment in municipal trail projects.

Recommendation	Entities	Timeframe
The Collin County Funding Assistance Program should remain a County-driven tool for supporting trail implementation.	<b>Leads:</b> County  <b>Partners:</b> Parks Foundation Advisory Board	Ongoing
The Collin County Funding Assistance Program should continue to be leveraged by municipalities as an opportunity to receive funding support.	<b>Leads:</b> County  <b>Partners:</b> Cities and Towns	Ongoing
The Parks Foundation Advisory Board should be the designated champion for implementing the goals of the Regional Trails Master Plan and supporting community efforts for trail implementation.	<b>Leads:</b> Parks Foundation Advisory Board  <b>Partners:</b> County	Ongoing
Regional and statewide grant programs should be pursued by the communities to further support the implementation of trail facilities.	<b>Leads:</b> Cities and Towns  <b>Partners:</b> County, NCTCOG, TxDOT, TPWD	Ongoing

# IMPLEMENTATION PROGRAM



**Prioritize** - *Prioritize the implementation of key trail connections that provide intercity connections, preserve key corridors, and introduce new trails into underserved areas of the County.*

Recommendation	Entities	Timeframe
The evaluation criteria established in the Regional Trails Master Plan should be utilized by the County and municipalities to identify priority trail projects.	<b>Leads:</b> County, Cities and Towns	<b>Ongoing</b> , the criteria should be reviewed prior to each project call to ensure it remains relevant
The Recommended Trail System should be a tool for the County and municipalities in determining priority corridors for increasing regional connectivity.	<b>Leads:</b> County, Cities and Towns	<b>Ongoing</b> , the Recommended Trail System should be updated as new information becomes available to ensure data is accurate
The Key Connection Points should be a tool for the County and municipalities in determining priority gaps in the intercity connections.	<b>Leads:</b> Cities and Towns <b>Partners:</b> County	<b>Ongoing</b> , the Key Connection Points should be updated as new information becomes available to ensure data is accurate



# MASTER PLAN DOCUMENT

## **Chapter 1 – *Context***

- Collin County Trails Plan
- Planning for a Regional Trails System
- County Snapshot
- Plan Vision & Guiding Principles

## **Chapter 2 – *The Regional Trails System Today***

- Collin County Trails System Today
- Needs Assessment

## **Chapter 3 – *Future Regional Trails System***

- Recommended Trail System
- Policy and Program Recommendations
- Guidance for Designing Trails

## **Chapter 4 – *Implementation***

- Plan Implementation
- Implementation Program
- Funding Opportunities
- Plan Administration

## **Appendix**

- Appendix A: Engagement Results
- Appendix B: Needs Assessment Technical Memo
- Appendix C: Key Connection Point Profiles