

WELCOME!

To the first Public Meeting for the

Collin County Regional Trails Master Plan

Collin County is seeking input for the update to the Regional Trails Master Plan. After a brief presentation, please take time to provide input at the stations located around the room. Your feedback is important in shaping the plan vision.



WHY PLAN NOW?

COLLIN COUNTY OPEN SPACE PROGRAM OVERVIEW

In 1986, the Commissioners Court established an Open Space Board, the first Open Space Plan was adopted, and subsequently the Open Space Program was established. In 1998, a bond program provided funds that included the development of the Collin County Parks and Open Space Strategic Plan.

As identified in the Open Space Strategic Plan, the purpose of the program is to *preserve open space, expand access to natural areas, and support municipalities' acquisition of green space and the management of the open space system.*

The priorities of the Open Space Strategic Plan are further realized through funding support from the Project Funding Assistance Program, which is administered by the Collin County Parks Foundation Advisory Board.

The Project Funding Assistance Program awards grant funding to Collin County communities and nonprofits interested in acquiring land for parks and open space, implementing regional trails or trail connections, and improving existing parks and open space facilities.

Regional trail connections and trail projects reflecting the recommendations of the master plan are prioritized during the review process for awarding grant funding.

PLAN PURPOSE

The Regional Trail Network within Collin County continues to expand with new development, but as growth continues to occur and development occupies more previously undeveloped land it is necessary to plan for continued expansion. This update comes at a time when trail development must consider existing constraints and identify new opportunities. Key components of the planning process include the following steps:

- Review and update the 2012 Master Plan
- Provide direction for the continue development of the countywide trail network
 - Reflect the vision of county residents and stakeholders
- Prioritize implementation of trail segments over time

PLAN PROCESS



Phase 1 – Discover. The initial phase of the plan update process inventories existing conditions, creating an updated inventory of existing and currently planned trails within Collin County communities, identifying accomplishments since the adoption of the 2012 plan, and obtaining feedback on issues and opportunities from key stakeholders and residents.



Phase 2 – Assess. This phase focuses on the evaluation of the Regional Trails Network to determine opportunities and constraints for the trails network and key intercity connections.



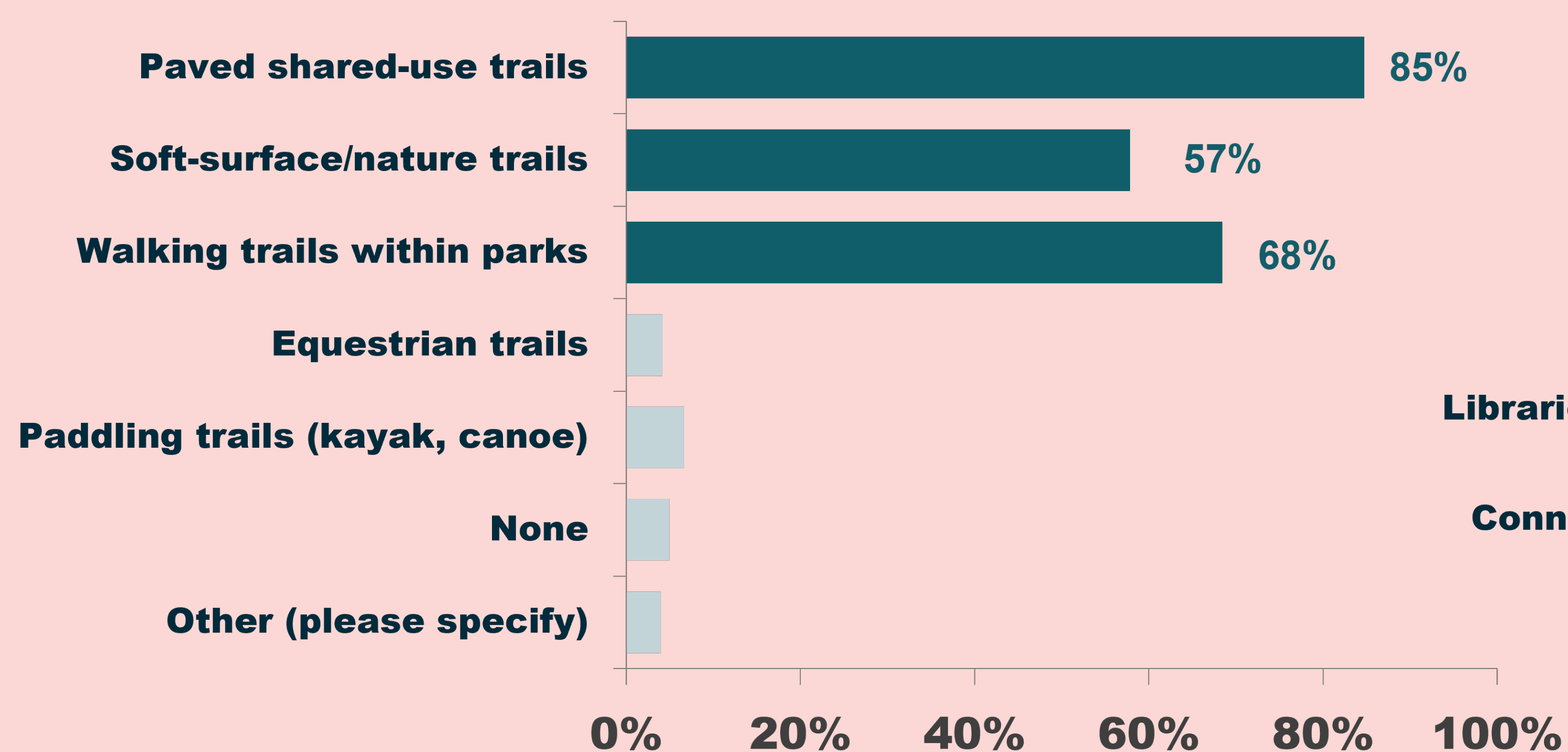
Phase 3 – Recommend. The third phase of the plan update includes an updated Regional Trails Network map that identifies proposed regional trail corridors and key intercity connections in addition to existing currently planned community trails. The phase also includes policy and program recommendations for the entire Regional Trails Network.



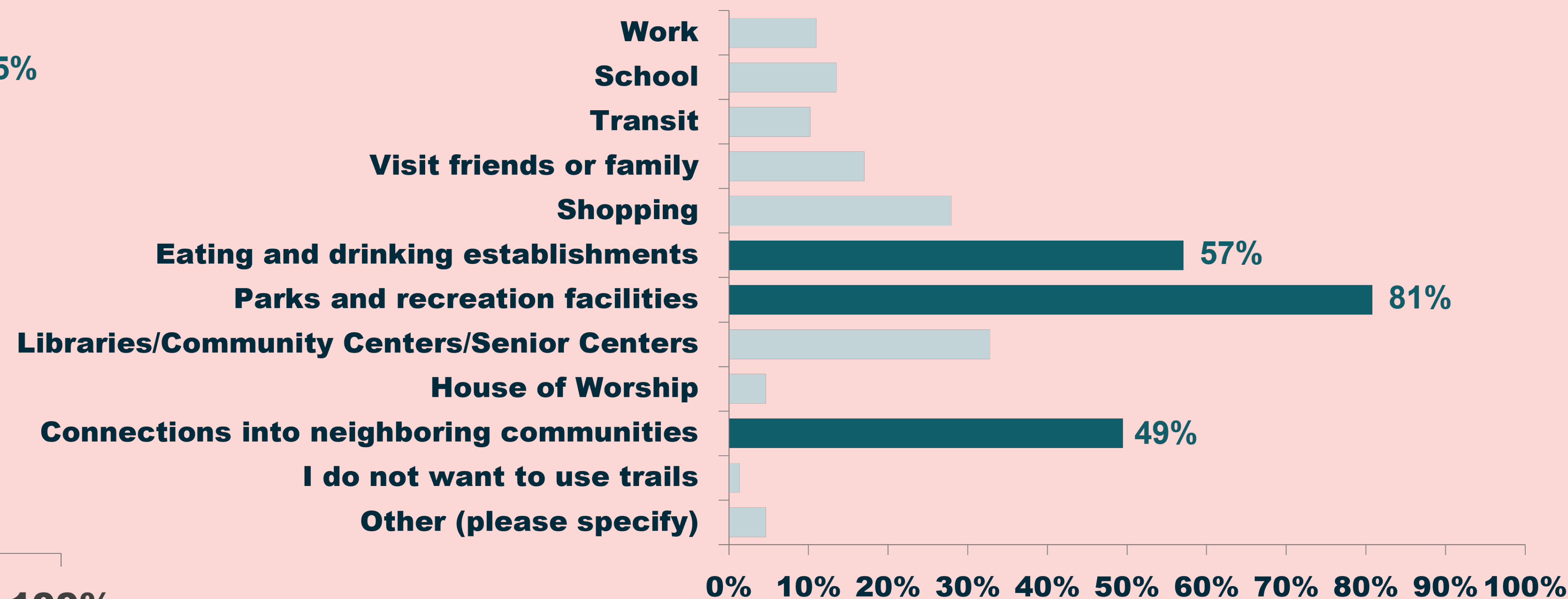
Phase 4 – Implement. The final phase of the plan update is to develop an implementation plan, designate priority corridors for investment, and identify potential funding opportunities.

COMMUNITY SURVEY RESULTS

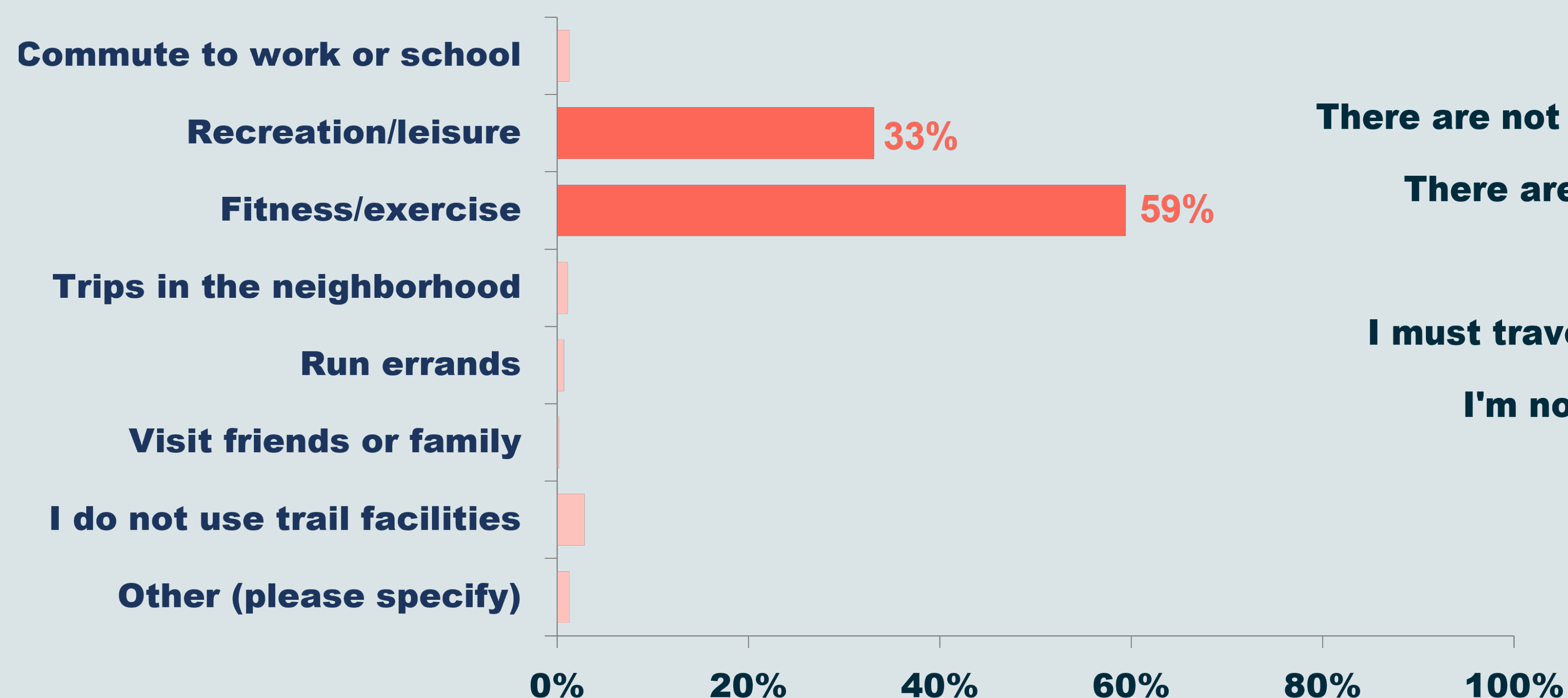
What type of trail facilities do you use in Collin County today?



What types of destinations would you like to be able to access by trail?



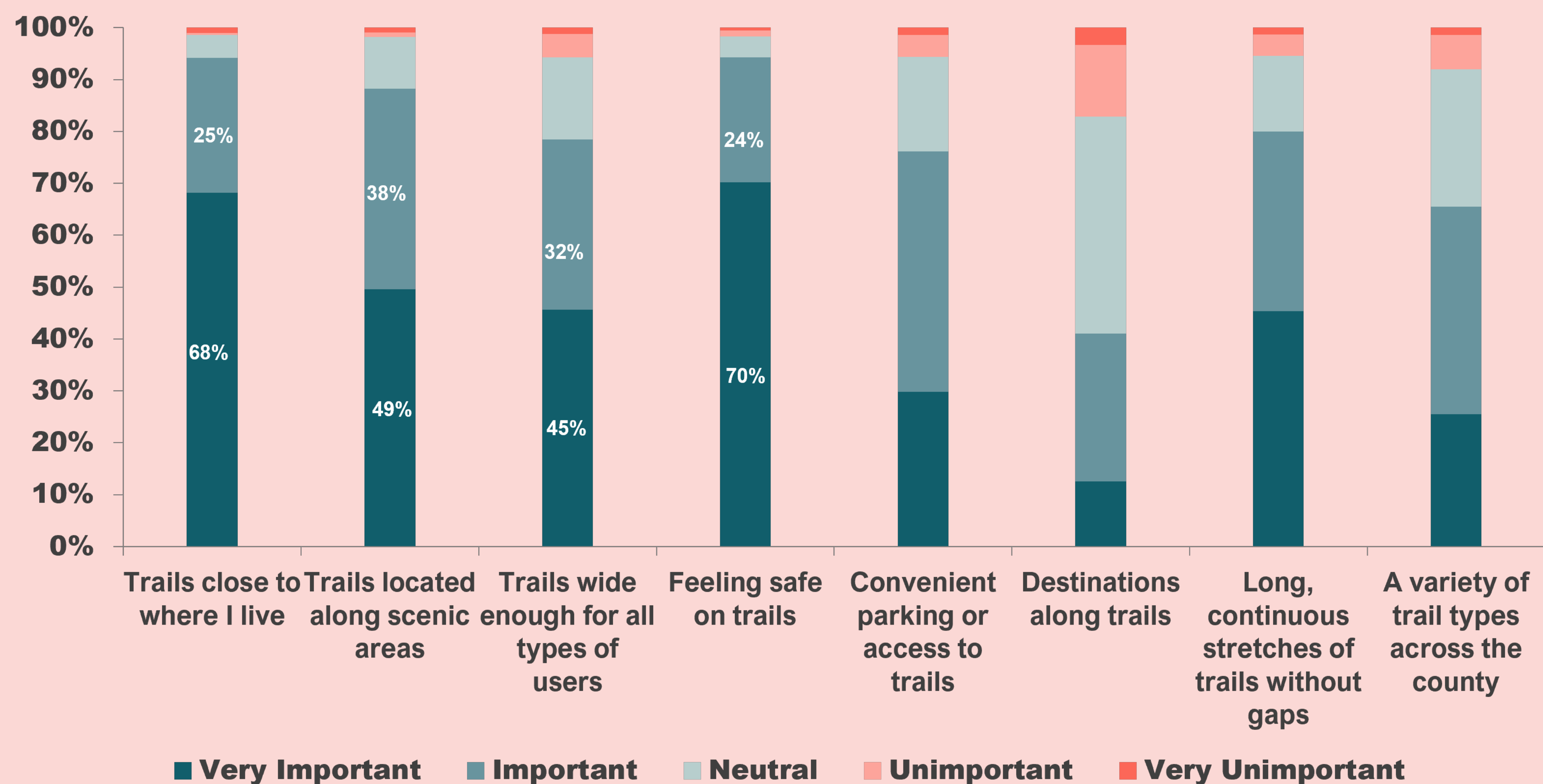
What is your primary purpose for using trails in Collin County?



What prevents you from using trails more often than you do today?

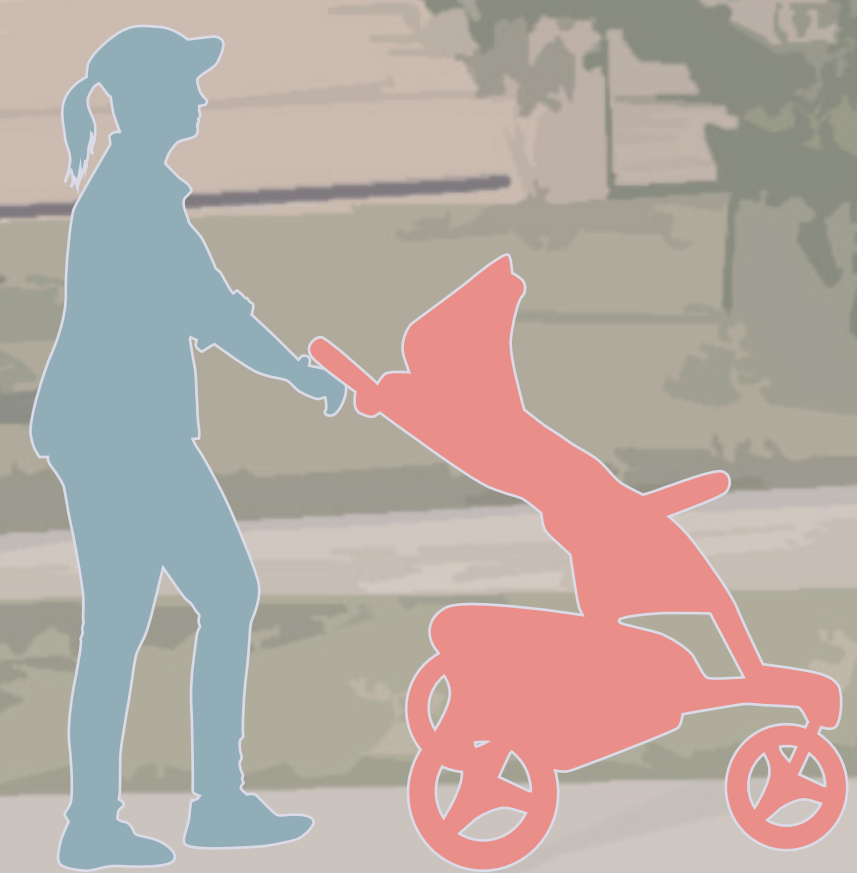


Indicate the level of importance of the following components of trails.



KEY FINDINGS

- Respondents most commonly use paved shared-use trails and walking trails within parks
- Fitness and exercise is the top primary purpose for trail use
- Parks and recreation facilities are the destinations most desired to be accessible by trail
- Lack of trail facilities and lack of trail connections to preferred destinations are top challenges preventing trail use



MASTER PLAN VISION



PLEASE USE THE STICKY NOTE PROVIDED TO ANSWER THE QUESTIONS BELOW.

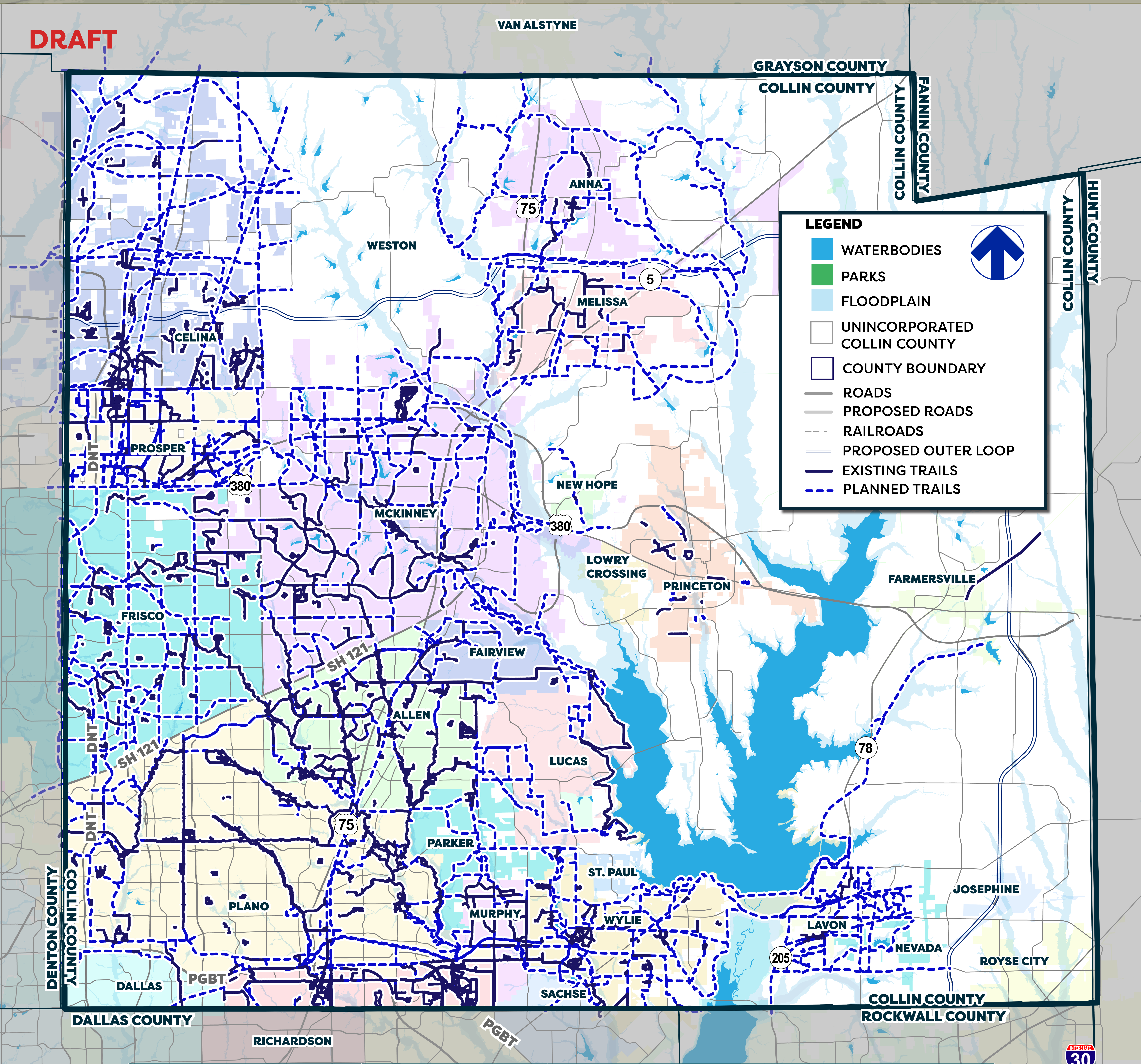
What is your favorite trail in Collin County today?

Where would you like to see more trails in Collin County in the future?



EXISTING REGIONAL TRAIL SYSTEM MAP

DRAFT



DRAFT	Existing Trail Mileage	Planned Trail Mileage	Total Mileage
2012 Trail Mileage	268.7	890.0	1,158.7
2025 Trail Mileage	613.91	924.69	1,538.6
Difference Between 2012 and 2025 Trails Mileage	Increased by 345.21 miles (128%)	Increased by 34.69 miles (4%)	Increased by 379.9 miles (33%)

PLANNING FOR A REGIONAL TRAIL SYSTEM

2012 PLAN HIGHLIGHTS

- The first countywide trail master plan was adopted in 2012 serving as a single guiding document for regional trail development with Collin County
- Approximately **269 miles** of trail existed in 2012 or had funding for near-term implementation and approximately **890 miles** of trails were planned
- Proposed a Major Trail Corridor Network, which identified major intercity linkages that connect to or overlap with local trails in communities
- **32** Key Intercity Connection Points were identified and analyzed for opportunities, constraints, and potential alternative routes to create successful connections between communities

ACCOMPLISHMENTS SINCE 2012

- Communities have added **345.21 miles** of trails since the 2012 plan has been adopted
- Completed **3** and partially completed **4** of the **32** Key Intercity Connection Points
- **28** trail projects in **12** communities have been funded through the Collin County Project Funding Assistance Program call for projects
- **13** of the funded projects have been completed
- **23** municipalities in Collin County have adopted a new or updated Trails Master Plan for their community

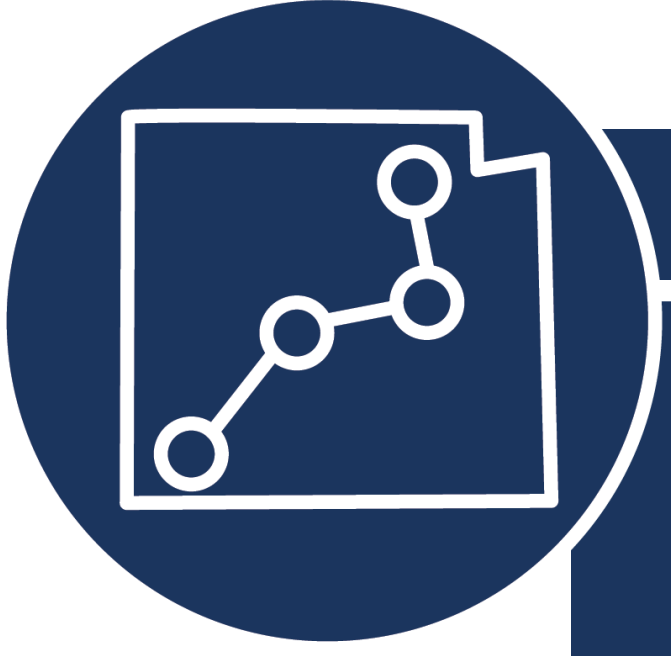
RELATED PLANNING INITIATIVES

- Regional plans that were reviewed and considered as part of the plan update include: Collin County Parks and Open Space Strategic Plan (2001), Collin County Thoroughfare Plan (2019, Update Underway) Collin County Future Mobility Study (2024), Collin County Outer Loop, North Central Texas Council of Governments (NCTCOG) Mobility 2045 Plan
- The North Central Texas Council of Governments has mapped an 8,618 mile long active transportation network of regional shared-use paths known as the Regional Veloweb. The Regional Veloweb consists of community shared use paths and on-street bikeway networks that are in various stages of development



PLAN GUIDING PRINCIPLES

Guiding principles were developed as a way to refine the original objectives of the 2012 Plan and were reviewed by staff and stakeholders.



Connect

Promote a regional trail system that creates key connections between communities throughout Collin County by identifying critical gaps and key corridors for future trail development.



Coordinate

Work with municipalities to build upon existing trail planning efforts to continue to grow the regional trail system and incorporate the recommendations of the countywide master plan into future trail planning and implementation.



Invest

Utilize the priorities identified in the Collin County Regional Trails Master Plan to guide investment in municipal trail projects.



Prioritize

Prioritize the implementation of key trail connections that provide intercity connections, preserve key corridors, and introduce new trails into underserved areas of the County.



Is there anything you would change or add to the draft guiding principles?

NEEDS ASSESSMENT METHODS

EXISTING NETWORK EVALUATION

Assessment of key future trail corridors and connection points based on categories for evaluation to determine feasibility, constraints, and opportunities for implementation.

CRASH DATA ANALYSIS

Review of TxDOT reported bicycle and pedestrian crash data throughout Collin County to determine areas with high crash instances.

FACILITY USAGE & DEMAND

Review of community survey findings and Strava data regarding facility usage to help determine demand for different types of facilities.

TRAIL COUNTER DATA

Review of trail counter data available for Collin County communities to understand existing trail usage.

TRIP POTENTIAL ANALYSIS

Evaluate the level of future trip generation potential of a community destination to determine key locations for future trail implementation.

SYSTEM OPPORTUNITIES

Mapping of key opportunities throughout the county to identify locations for completing planned trail connections, creating new connections between communities, and preserving key trail corridors.

EXISTING NETWORK OBSERVATIONS



Well-used trails.



Diverse types of trails.



Trails built with new development.



Innovative crossings.



Gaps in trail network.



Lack of comfortable facilities in places.



BICYCLE AND PEDESTRIAN CRASHES

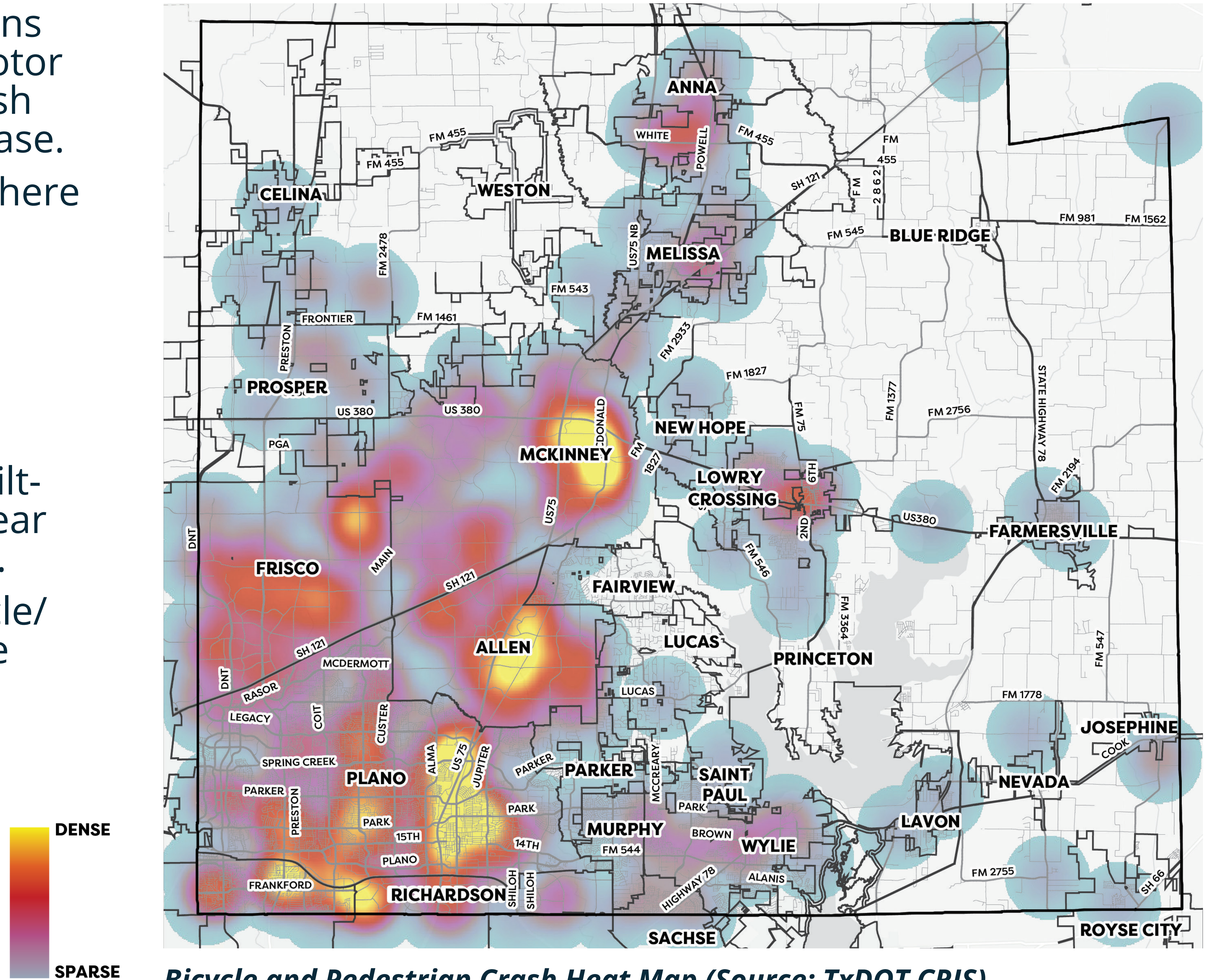
The map to the right depicts concentrations of bicycle and pedestrian crashes with motor vehicles. Data is pulled from TxDOT's Crash Records Information System (CRIS) database.

From 2022 to 2024, within Collin County there were:

- **249** bicycle crashes
- **308** pedestrian crashes
- **36** fatalities

As shown on the map, there are denser concentrations of crashes in the more built-out portions of the County, particularly near highways or major roadway intersections.

This indicates that improvements to bicycle/pedestrian crossing infrastructure may be needed at these major intersections.



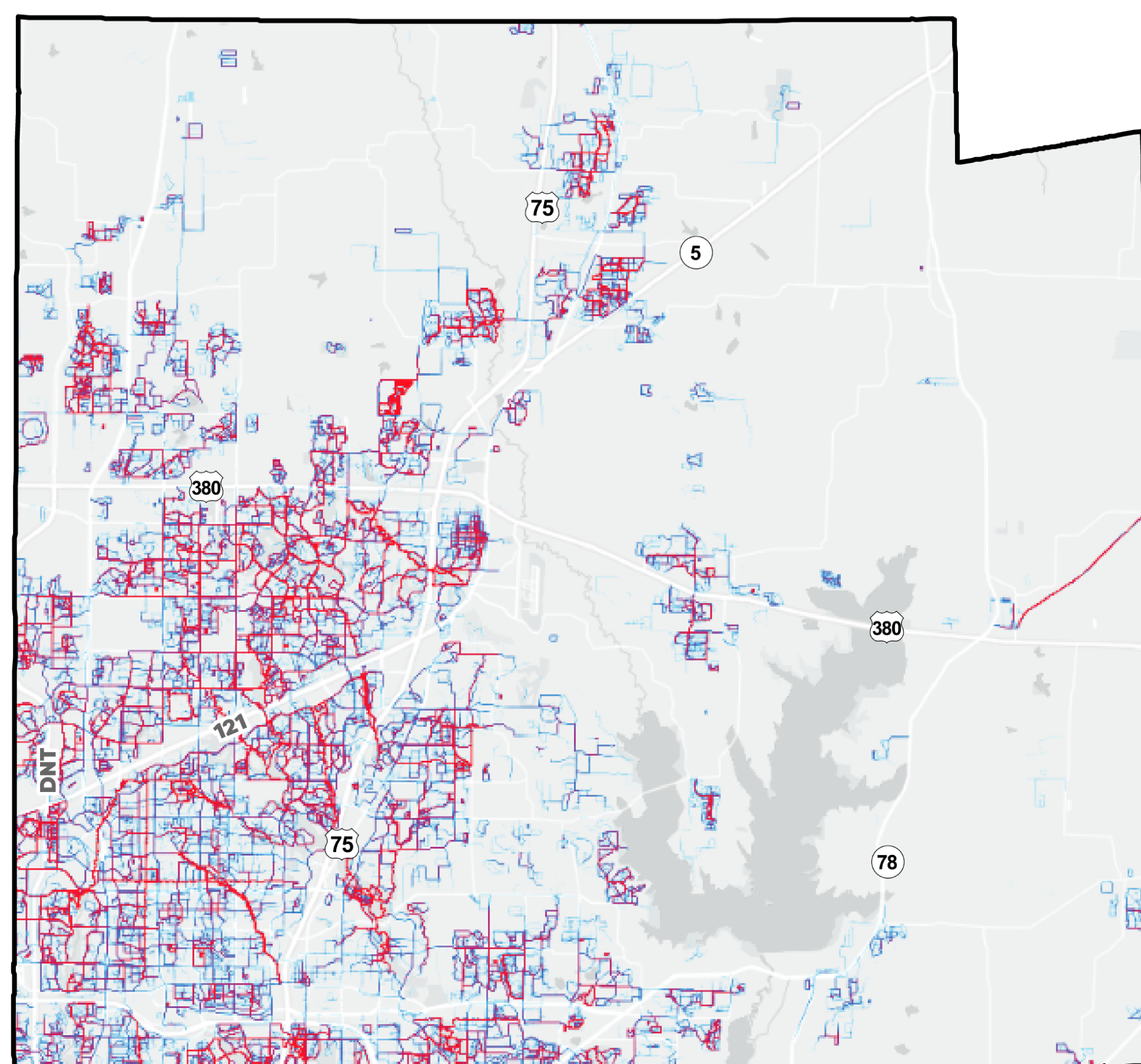
FACILITY USAGE AND DEMAND

To help determine what facilities are being used today and where demand for facilities may exist, NCTCOG trail counter data and user-inputted Strava data was reviewed.

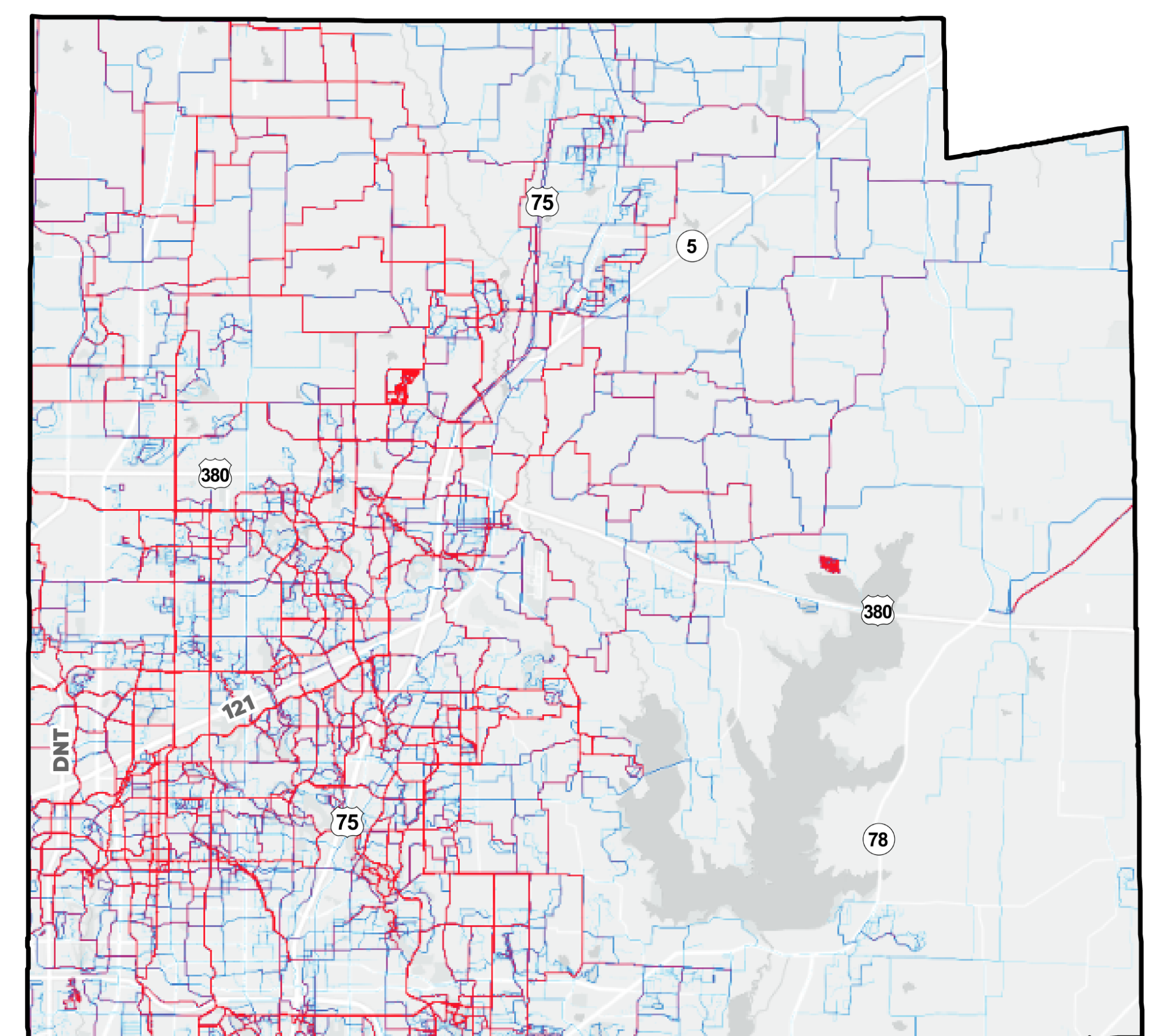
Strava is a GPS-based system in which cyclists, joggers, hikers, walkers, and other recreational users can log their routes.

The heat maps to the right represent the most frequently used routes for foot traffic and bicycle traffic based on Strava data.

The foot traffic primarily corresponds with existing trails and sidewalks within communities, while the bicycle traffic also includes rural roads in less developed portions of the County.



Pedestrian Travel Heat Map (Source: Strava)



Bicycle Travel Heat Map (Source: Strava)

SYSTEMWIDE OPPORTUNITIES

KEY CONNECTION POINTS MAP ELEMENTS

Board 10 includes the draft **Key Connection Points Map**, which represent critical opportunities to create trail connections between cities. The connection points from the 2012 plan have been reviewed and updated based on what has been completed and what is no longer feasible.

- The **2012 Master Plan** identified **32** key connection points.
- Since 2012, **three (3) have been completed** and **four (4) are in process**.
- Today there are **24** proposed key connection points.
- Coordination amongst both municipalities is key for the connection to be a reality.

The key connection points between communities will be a focus for future funding allocation from the Collin County Project Funding Assistance Program.



Completed trail segment in Plano that is planned to connect into Allen. Often times, major barriers such as roadways or environmental features pose challenges to completing the key connection.

Completed trail segment in Celina that is planned to connect into Prosper. Some gaps in intercity connections are due to development occurring on one side of the municipality boundary and not the other.



OPPORTUNITY MAP ELEMENTS

Board 11 includes the draft **Opportunity Map**, which details both existing trail corridors and opportunities for new corridors in the future. This section describes each of the elements used to develop the Opportunity Map.

KEY DESTINATIONS

Locations throughout the County that provide community, recreation, or employment services. These points are destinations that people may desire to connect to via trails.

GROWTH AREAS

Areas of the County where significant population growth is projected to occur between 2026 and 2050, based on NCTCOG's population forecasts.

NCTCOG REGIONAL VELOWEB

Network of existing and planned off-street shared-use paths in the region that align with community plans and promote active transportation.

BICYCLE TOURISM STUDY ROUTES

TXDOT initiative to identify a statewide bicycle network to highlight unique natural and historical areas in the state. There are segments that fall within portions of Collin County.

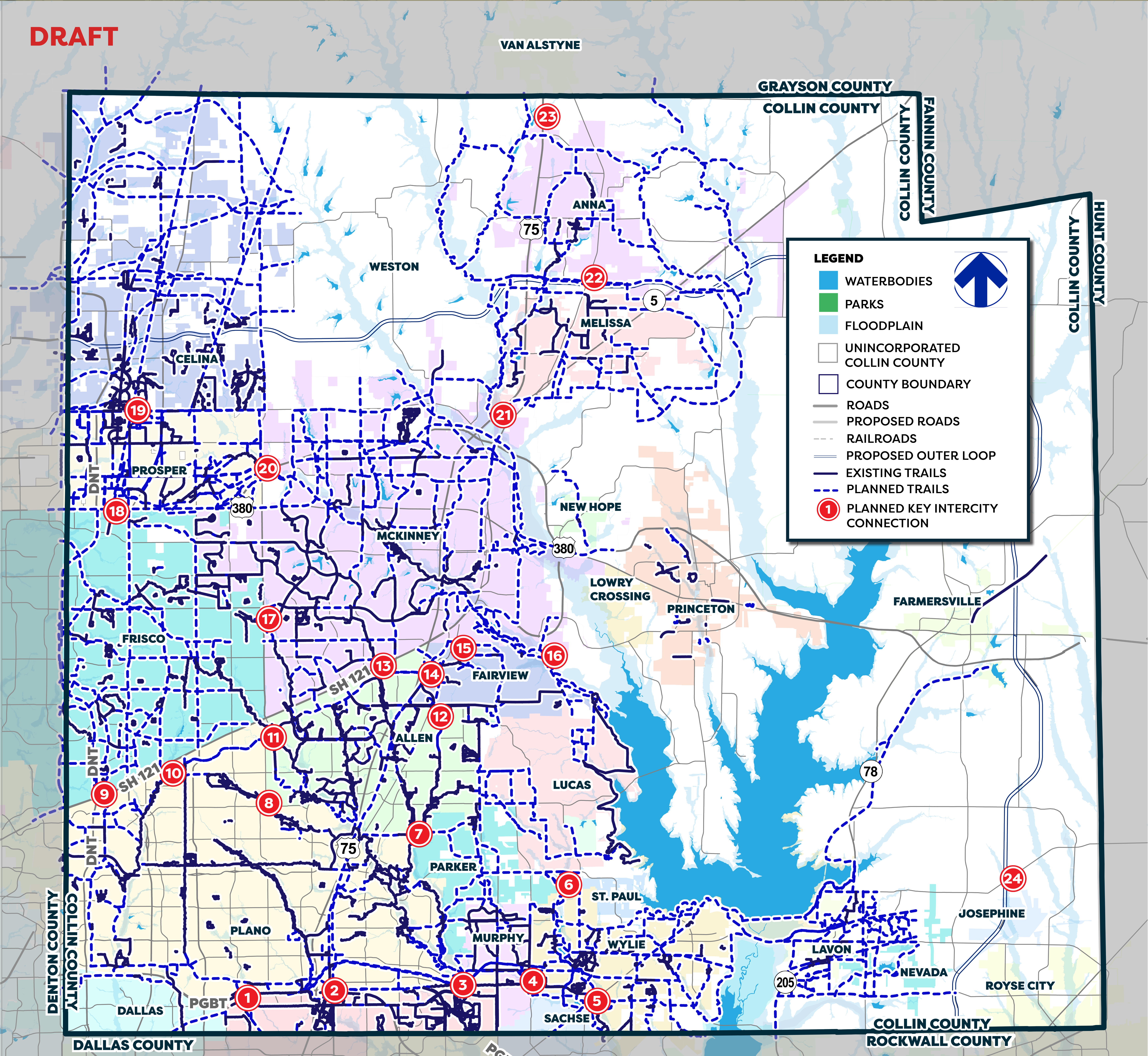
SPINE TRAIL CORRIDORS

Represent existing and proposed corridors that create major trail connections between multiple communities. Typically these are paved trails that are at least ten (10) feet wide.

COMMUNITY TRAIL CORRIDORS

Represent existing and proposed corridors that create significant connections within a single community or shorter connections between multiple communities.

DRAFT



Key Connection Points represent critical opportunities to create trail connections between cities. The connection points from the 2012 plan have been reviewed and updated based on what has been completed and what is no longer feasible.

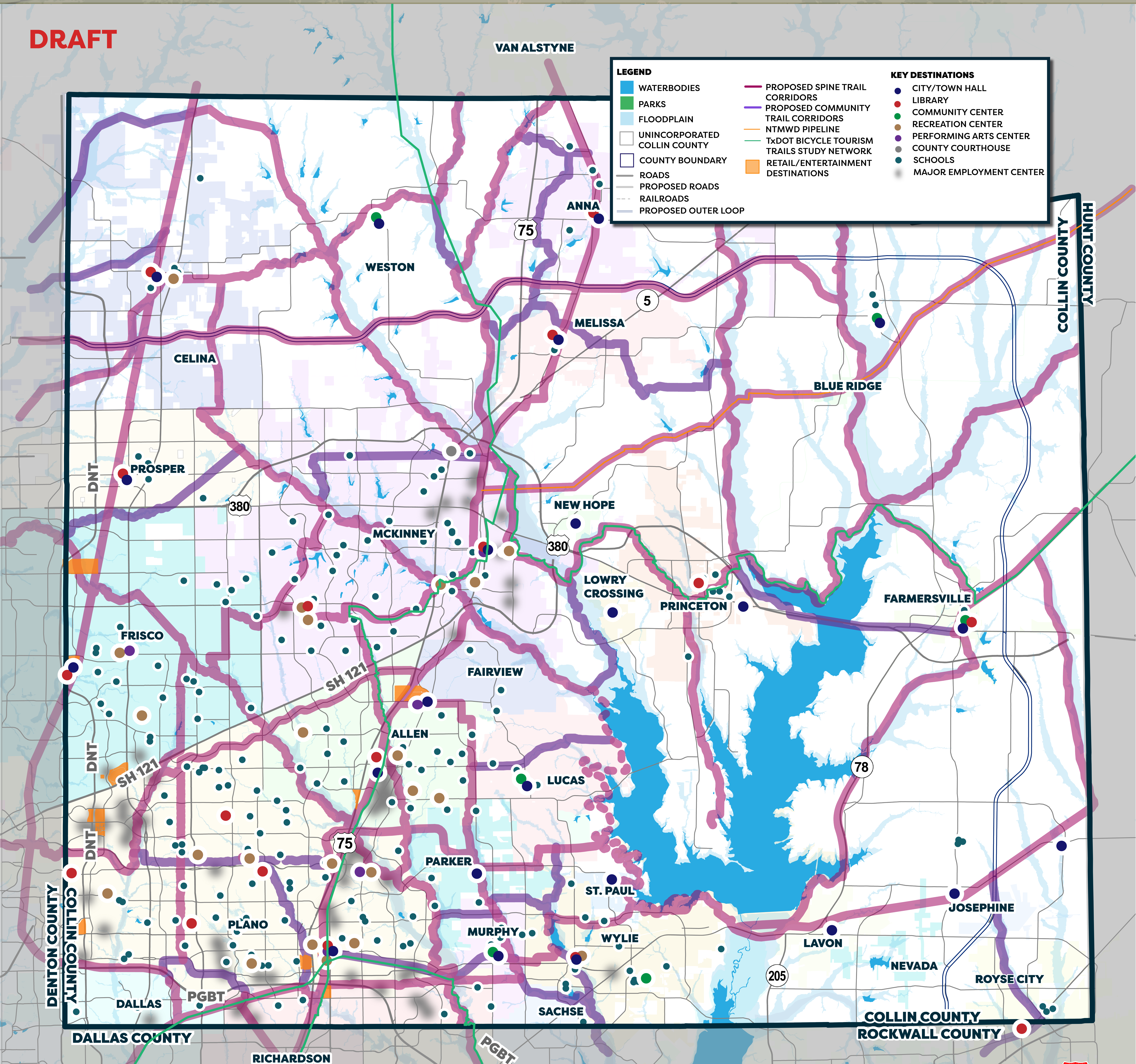
Using the quadrant maps on the table, please provide input on the following:
Are there additional key connections between communities that should be considered?





OPPORTUNITY MAP

DRAFT



The **Opportunity Map** details both existing trail corridors and opportunities for new corridors in the future.

Using the quadrant maps on the table, please provide input on the following:
Are there additional spine or community trail corridors that should be considered as part of this plan update?



WHICH OF THE FOLLOWING COMMUNITY DESTINATIONS DO YOU THINK ARE IMPORTANT TO BE ACCESSIBLE BY TRAIL? PLEASE PLACE A STICKY DOT NEXT TO YOUR TOP 3 PRIORITIES.

WORK

SCHOOL

TRANSIT

VISIT FRIENDS OR FAMILY

SHOPPING

EATING AND DRINKING ESTABLISHMENTS

PARKS AND RECREATION FACILITIES

LIBRARIES/COMMUNITY CENTERS/SENIOR CENTERS

HOUSE OF WORSHIP

CONNECTIONS INTO NEIGHBORING CITIES OR TOWNS

OTHER – PLEASE WRITE IN YOUR ANSWER IN THE SPACE PROVIDED OR ON A COMMENT CARD



WHICH OF THE FOLLOWING REGIONAL TRAIL SYSTEM IMPROVEMENTS ARE MOST IMPORTANT TO YOU? PLEASE PLACE A STICKY DOT BELOW YOUR TOP 3 PRIORITIES.

FILLING IN GAPS IN THE EXISTING PAVED TRAIL NETWORK

ADDING MORE EQUESTRIAN TRAILS

CREATING MORE CONNECTIONS BETWEEN CITIES WITHIN COLLIN COUNTY

ADDING MORE NATURAL (SOFT SURFACE) TRAILS

CREATING MORE CONNECTIONS TO CITIES JUST OUTSIDE OF COLLIN COUNTY

ADDING MORE PADDLING TRAILS

IDENTIFYING MAJOR CORRIDORS TO PRESERVE FOR FUTURE TRAIL DEVELOPMENT

IMPROVING CONNECTIONS TO KEY DESTINATIONS WITHIN COMMUNITIES

ADDING MORE TRAILHEADS AND TRAIL ACCESS POINTS TO EXISTING TRAILS

PROVIDING MORE CONSISTENT DESIGN STANDARDS TO BE APPLIED TO NEW AND REDEVELOPED SEGMENTS OF TRAIL

IMPROVING CONDITIONS OF EXISTING TRAILS (E.G. PAVEMENT QUALITY, REMOVAL OF OBSTRUCTIONS, ADDING SIGNAGE)

UPGRADING EXISTING TRAILS TO BE WIDER

IMPLEMENTING COUNTYWIDE SIGNAGE TO DESIGNATE REGIONAL ROUTES

THANK YOU!

For attending the first Public
Meeting for the

Collin County Regional Trails Master Plan

Please use a comment card to
provide any additional feedback.

The next meeting will be late
summer 2025. Please use the
website below and the QR Code to
stay up to date with the project.

[https://www.collincountytx.gov/
Business-and-Living/Parks-and-
Open-Spaces/regional-trails](https://www.collincountytx.gov/Business-and-Living/Parks-and-Open-Spaces/regional-trails)

